



# Got an Opinion?

## Rebuilding Christchurch

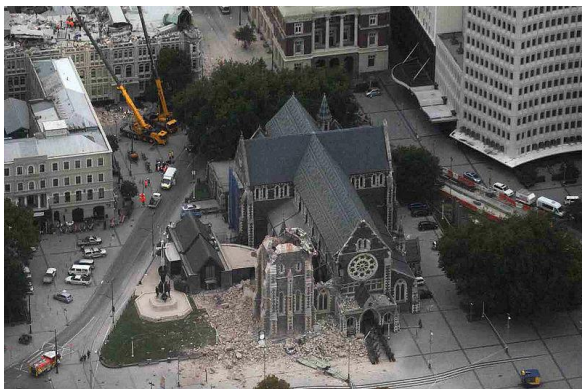
### The Planner's Perspective



NZPI Canterbury/Westland Branch wants your opinion on the main planning issues facing Christchurch as we rebuild.

We need:

- to give Canterbury planners a voice
- to understand the local perspective



It's your community. If you have an opinion

## Voice it

Send your key points, max. 1 page, to [canterbury.westland@planning.org.nz](mailto:canterbury.westland@planning.org.nz) by

5.00pm Monday 28 March

Your points will then feed into

**The Planner's Charette - to be held on  
Wednesday 13 April 2011**

